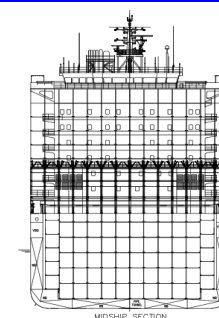
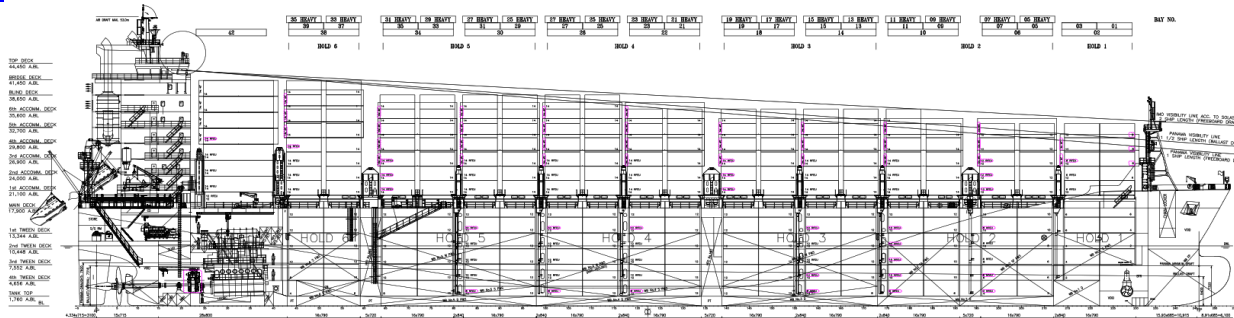


3,200 TEU CLASS CONTAINER CARRIER



MAIN DIMENSIONS

Length overall	abt.	199.9	m
Length between perp.		191.3	m
Breadth		35.2	m
Depth		17.9	m
Design draught (T _d)		8.5	m
Scantling draught (T _s)		11	m

DEADWEIGHT

Deadweight at T _s	abt.	41,300	MT
------------------------------	------	--------	----

CLASSIFICATION

ABS

A1, (E), AMS, Container Carrier, SHR, UWILD, CPS-B, LSC, +ACCU, CSC, CLP-V, ERGO(LASH), NBLES, BWT, HVSC, IHM, TCM, ENVIRO, EGC-EGR(M), NOx-Tier III, EGC-SOx(M), LNG Fuel Ready Level 1C, RW, CR, RRDA

FLAG

Liberia

TANK CAPACITIES

Heavy fuel oil	abt.	1,900	m ³
Marine diesel/gas oil	abt.	360	m ³
Fresh water	abt.	260	m ³
Ballast water	abt.	16,000	m ³

COMPLEMENT

25

CONTAINER CAPACITIES

With max. number of containers (SOLAS Visibility)		
On deck		1,934 TEU
In hold		1,230 TEU
Total		3,164 TEU

Reefer container (9'6" high)

On deck	40'	474	Units
In hold	40'	294	Units
Total	40'	768	Units

Homogeneous @14T abt. 2,600 TEU

Stack loads in holds:

20'-container weights of 6 x 24.0 tons = 144 tons

40'-container weights of 6 x 30.5 tons = 183 tons

MAIN ENGINE

Type	MAN B&W 6G60ME-C10.5 Tier III
MCR	13,000 kW x 85 rpm
NCR	11,700 kW x 82.1 rpm

SERVICE SPEED

Service speed at T _d	abt 18.6knt
Sea margin	15 %

FUEL OIL CONSUMPTION OF MAIN ENGINE

D.F.O.C. at NCR 42.7MJ/kg 46 MT (Tier II)

CRUISING RANGE

abt. 15,000 NM

BOW THRUSTER

1,250 kW x 1 set

CARGO HATCH COVER

Type	Steel pontoon, non-sequential
Tank Top Stack	144 tons / 20ft, 183 tons / 40 ft
Panel weight	1,2F/A-6 60/80/90mt, No2-6 80mt (incl. container loose fittings)

POWER SUPPLY

Diesel generators	1,463 kW x 4 sets
Shaft Generator (SG)	1300 kW x 1 set
Emergency generator	175kW x 1 set
Normal sea going (excl reefers):	SG

Normal sea going (incl reefers): 3DG, 1 SG

Other special features

Lashing bridges on deck
AMP 4,800 KVA (6.6KV/450V), 2 cable reels
EGCS U type open look
VFD on cooling water pump and fans in ER
Rudder full spade with twist leading edge and bulb
Preswired duct with fins
High Efficiency Propeller
LED lighting fixtures