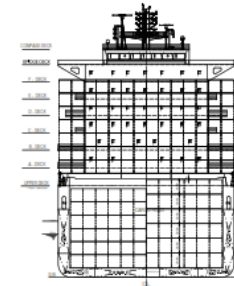
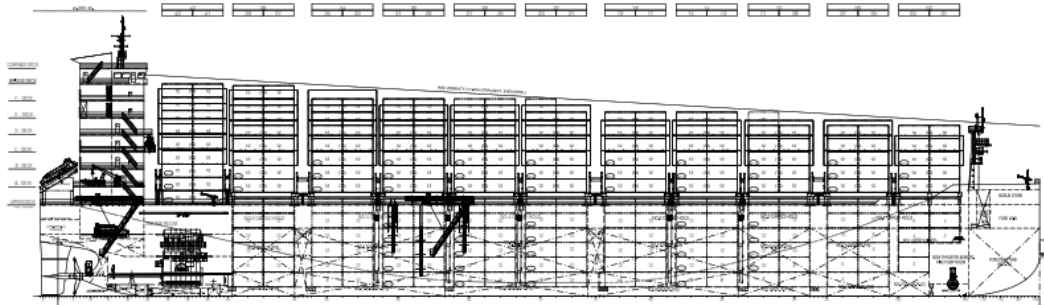




SUMEC(New Dayang Shipyard) - 3,200 TEU CLASS CONTAINER CARRIER



MAIN DIMENSIONS

Length overall	abt.	199.9	m
Length between perp.		196.4	m
Breadth		35.2	m
Depth		17.9	m
Design draught (T _d)		8.5	m
Scantling draught (T _s)		11	m

DEADWEIGHT

Deadweight at T _s	abt.	41,000	MT
------------------------------	------	--------	----

CLASSIFICATION

ABS, notations:

+A1, Container Carrier, (E), +AMS, CPS-B, CR, SH, SHCM, +ACCU, BWT, CLP V, CRC(SP), CSC, ENVIRO, ERGO(LASH), HVSC, IHM, LSC, NOx-Tier III, RW, TCM, UWILD, Methanol-ready, EGCS

FLAG

Liberia

TANK CAPACITIES

Heavy fuel oil	abt.	1,850	m ³
Marine diesel/gas oil	abt.	300	m ³
Fresh water	abt.	300	m ³
Ballast water	abt.	15,000	m ³

COMPLEMENT

24+6 suez

CONTAINER CAPACITIES

With max. number of containers (SOLAS Visibility)			
On deck		1,978	TEU
In hold		1,220	TEU
Total		3,198	TEU

Reefer container (9'6" high)

On deck	40'	502	Units
---------	-----	-----	-------

In hold	40'	298	Units
---------	-----	-----	-------

Total	40'	800	Units
--------------	------------	------------	--------------

Homogeneous @14T abt. 2,560 TEU

Stack loads in holds:

20'-container weights of 6 x 30.5 tons = 183 tons

40'-container weights of 6 x 30.5 tons = 183 tons

MAIN ENGINE

Type	MAN 6G60ME-C10.5-HPSCR Tier III		
MCR	13,000 kW	x	97.0 rpm
CSR (90%MCR)	11,700 kW	x	93.7 rpm

SERVICE SPEED

Service speed at T _d	abt	18.4knt
Sea margin		15 %

FUEL OIL CONSUMPTION OF MAIN ENGINE

D.F.O.C. at NCR 42.7MJ/kg	44.9 MT (Tier II)
	45.1 MT (Tier III)

CRUISING RANGE

abt. 17,600 NM

BOW THRUSTER

1,200 kW x 1 set

CARGO HATCH COVER

Type single plated, welded open type steel construction

Tank Top Stack 183 tons / 20ft, 183 tons / 40 ft

Panel weight No. 1F 60/90mt, No 1A-6 90/140mt
Upper deck 90/140mt

POWER SUPPLY

Diesel generators	1,900 kWe x 4 sets
Shaft generator	1,600 kWe x 1 sets
Emergency generator	200kWe x 1 set

Other special features

Rudder full spade with twist leading edge and bulb

ESD - Preswired Duct

High Efficiency Propeller

LED lighting fixtures

VFD for main cooling SW pumps and ER fans

Open loop Scrubber (EGCS)

AMP 4,800kVA (AC6.6KV/450V, 3PH, 60Hz), 2 cable reels